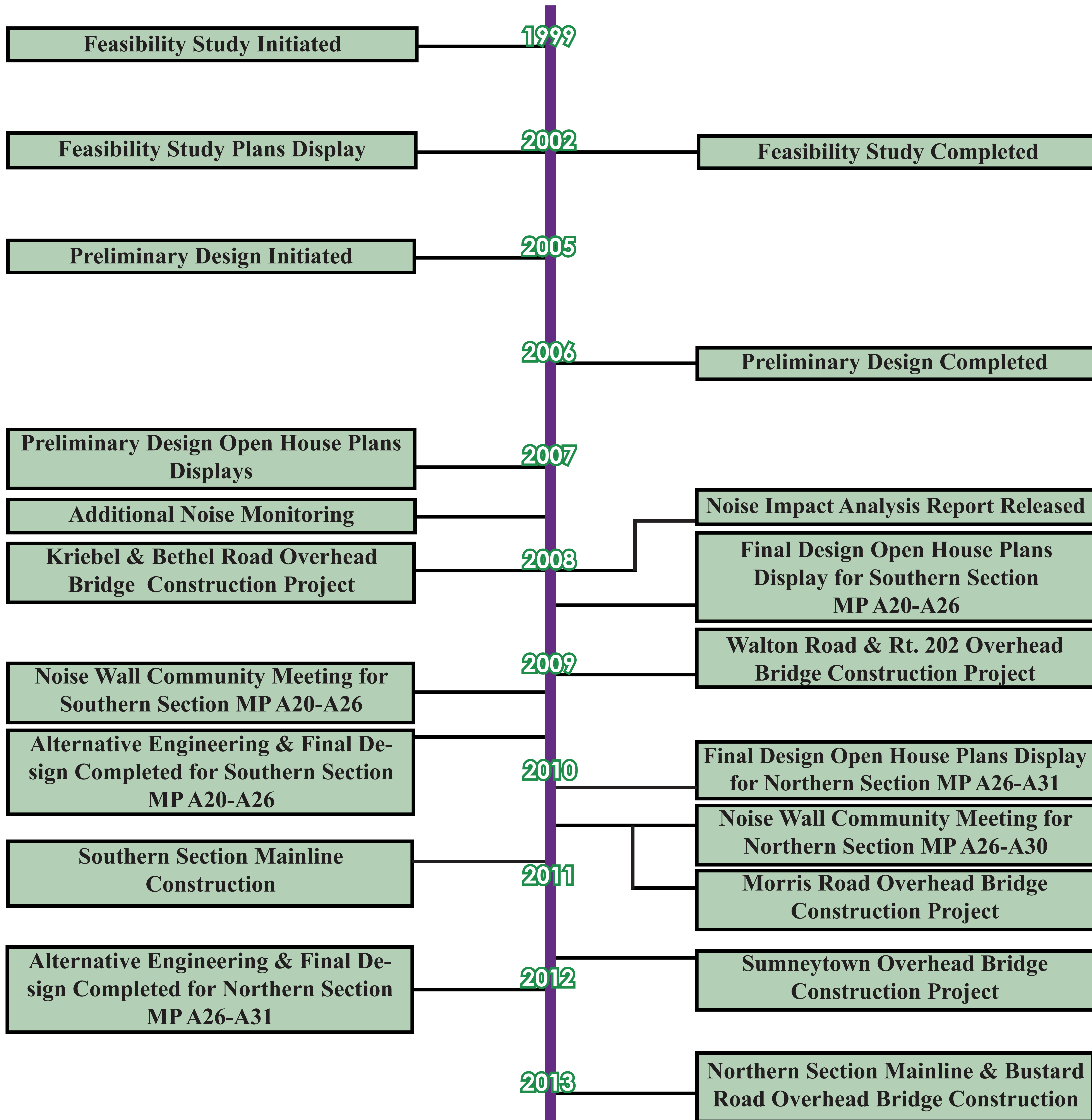




Updated Project Timeline



This timeline represents an overview of the project history and an estimated time frame for future project milestones. This project is part of the Pennsylvania Turnpike Commission's \$2 billion statewide total reconstruction initiative which entails rebuilding sections of the 50-plus-year-old turnpike facility from the ground up. The new roadway design meets current interstate design standards, and will provide a safer and more efficient travel experience for Turnpike customers. Traffic volumes currently estimated at 67,000 vehicles/day on this section of the Turnpike roadway are projected to reach 100,000 vehicles/day by the year 2030.

* All future project dates are estimates and are subject to change.